



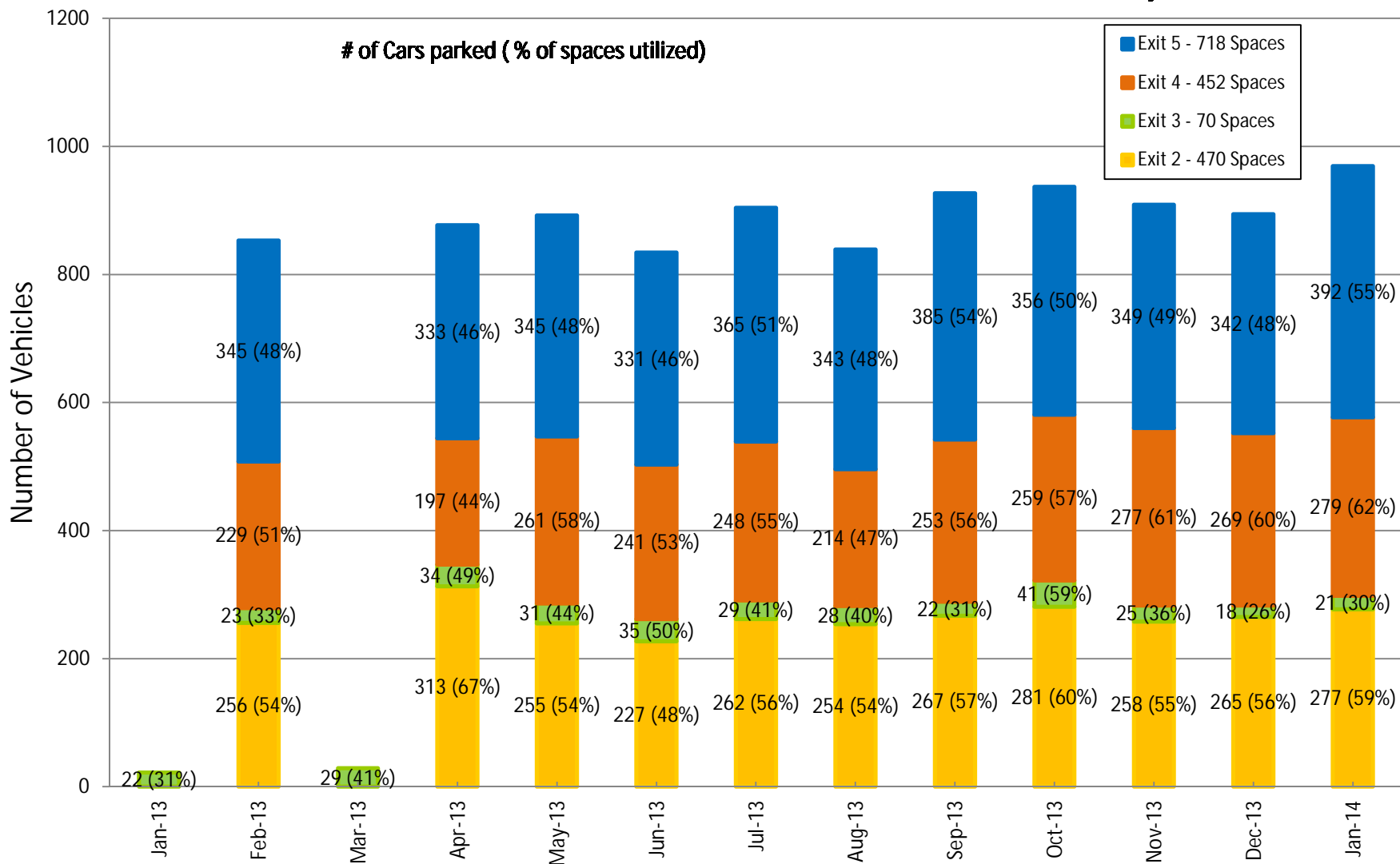
Summary of Park-n-Ride Facilities and Boston Express Ridership through January 2014

Updated 2/17/14

I-93 Park & Ride Counts

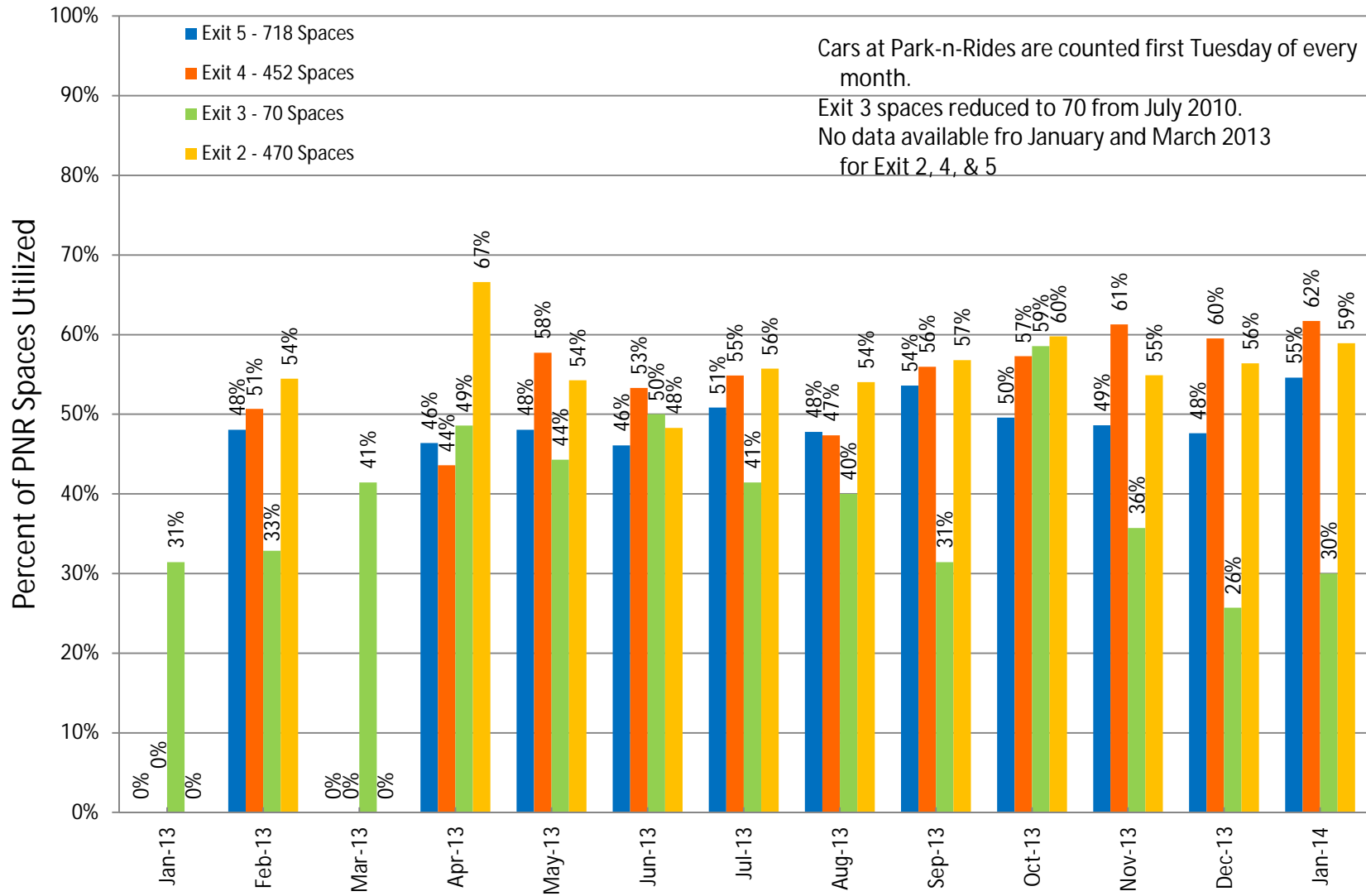
Average Daily Use

Cars at Park-n-Rides are counted first Tuesday of every month.



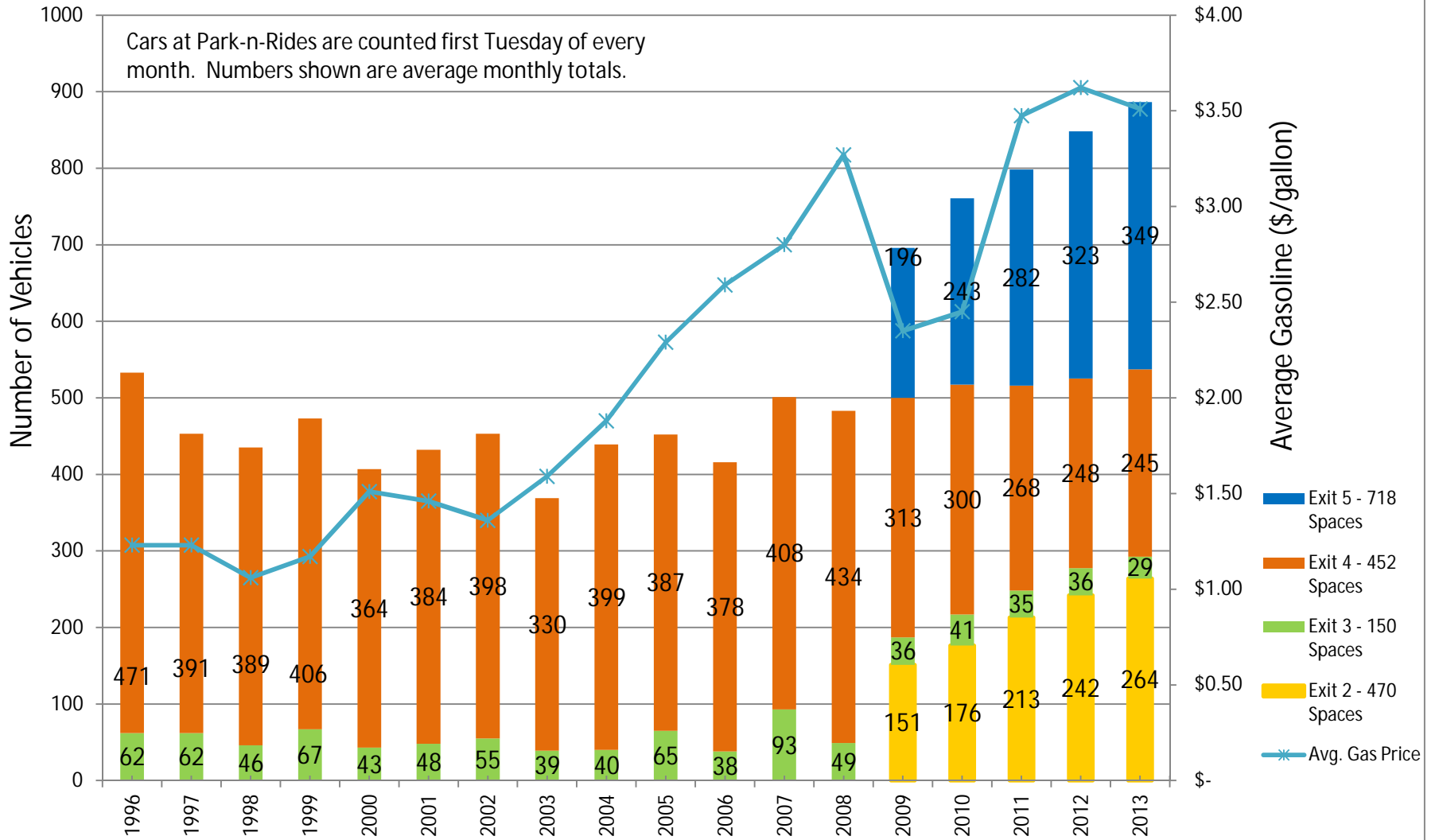
I-93 Park & Ride Counts

Average Daily Use



I-93 Park & Ride Counts vs. Gas Prices

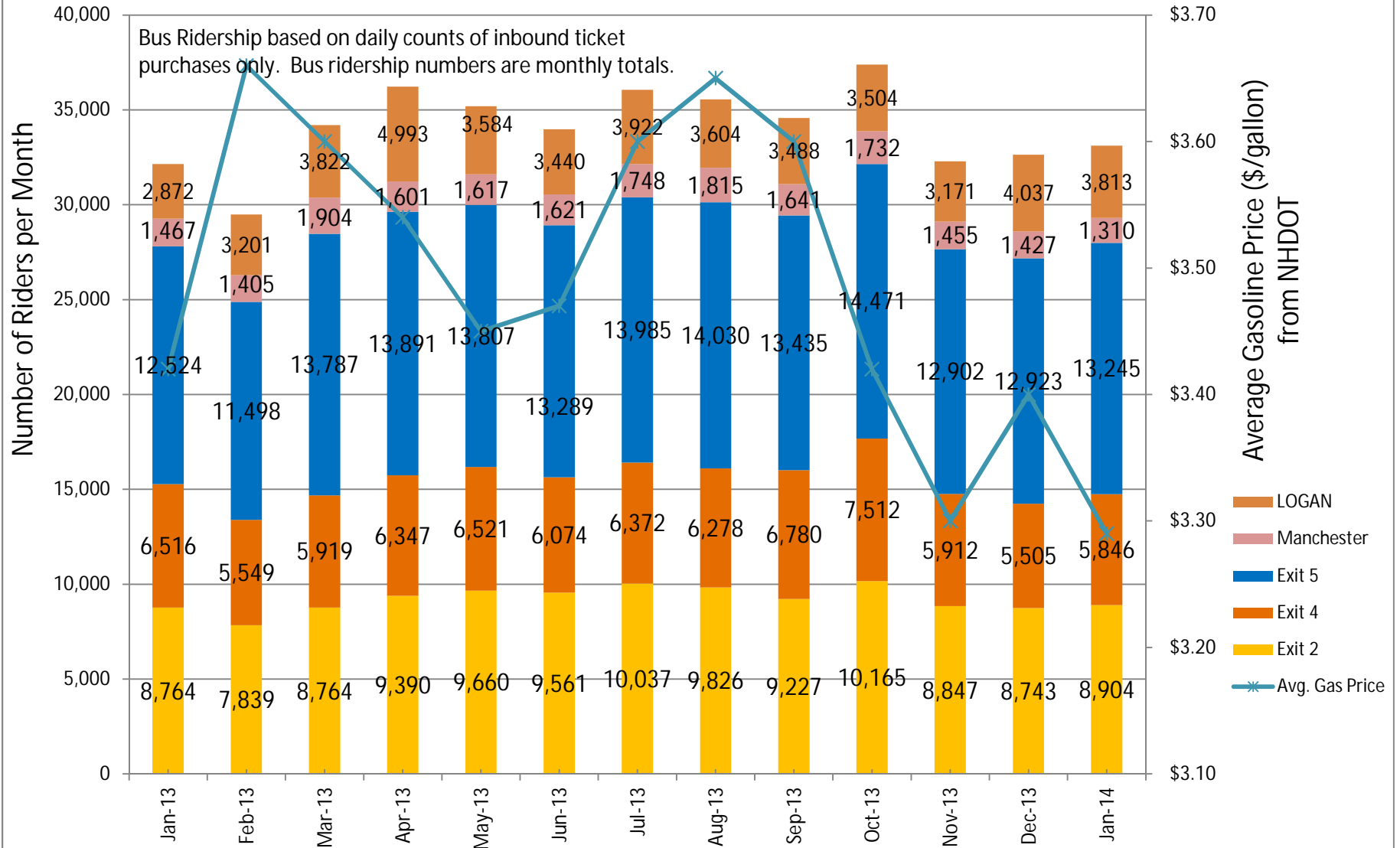
Average Daily Use Per Year



*2012 average price and veh. through Nov.

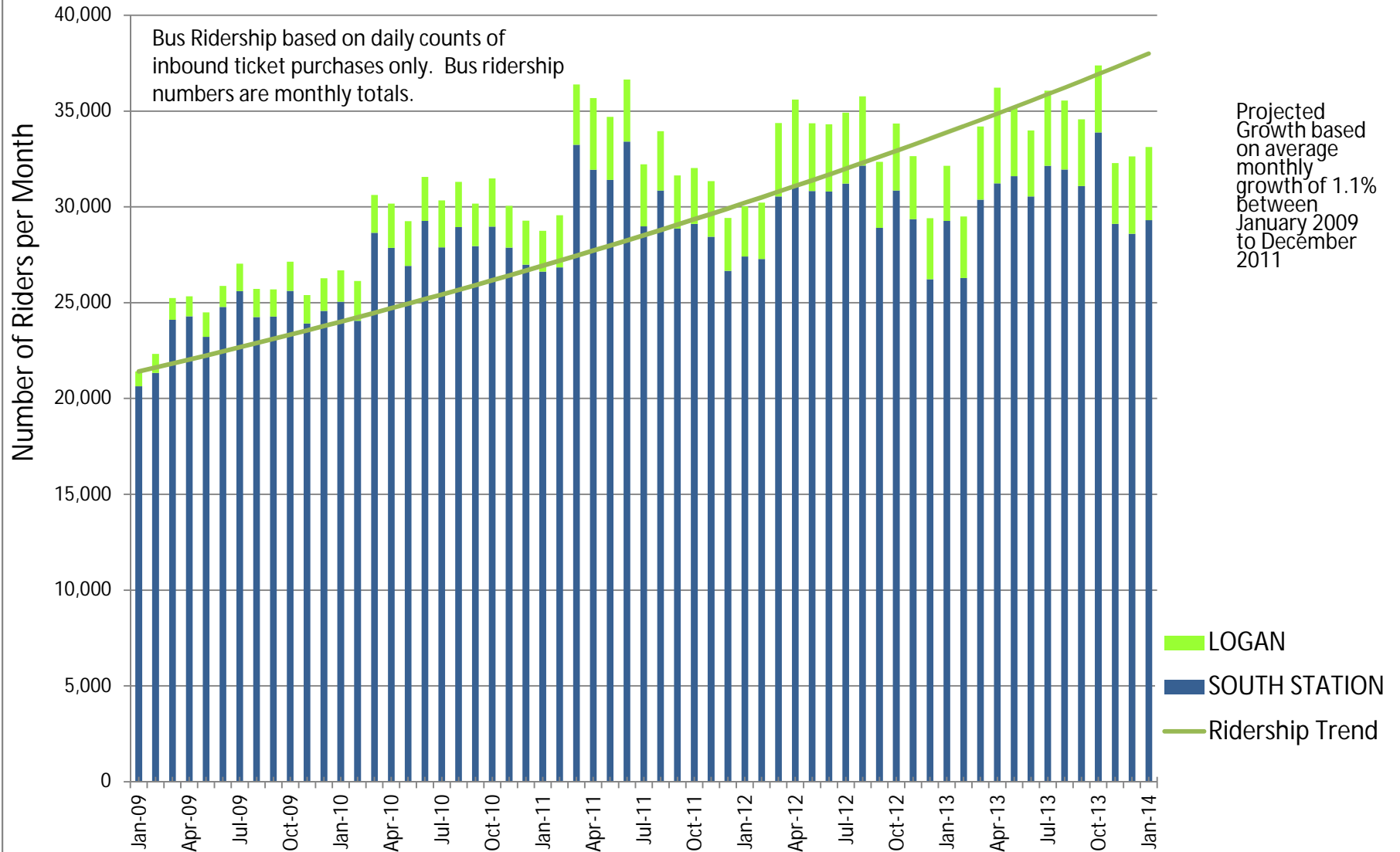
I-93 Bus Ridership vs. Gas Prices - 2013

Bus Ridership per Month



I-93 Bus Ridership Projected Growth

Bus Ridership per Month



I-93 Bus Ridership Trends

Bus Ridership per Month

