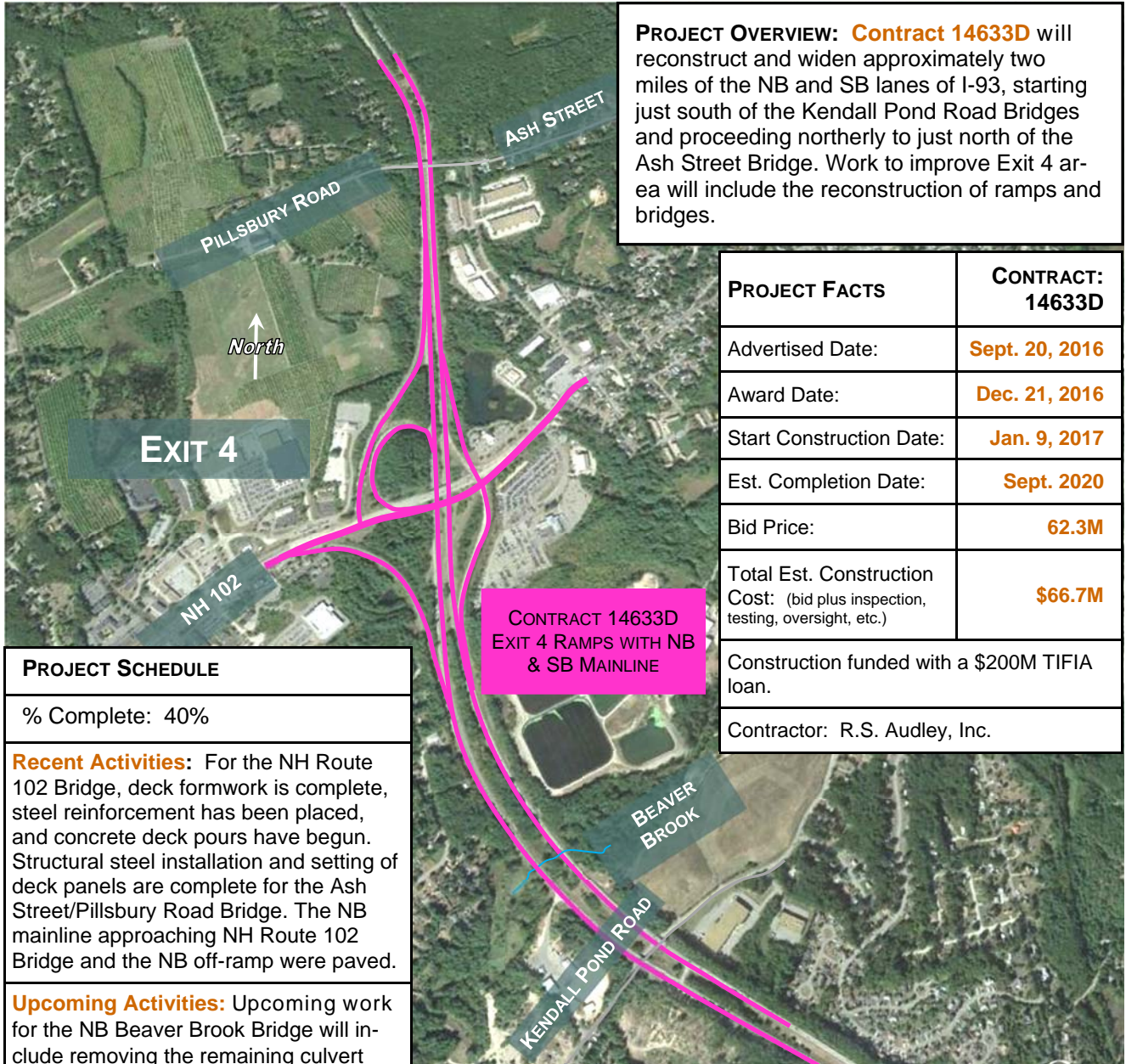


# REBUILDING I-93 SALEM TO MANCHESTER



## 14633D: EXIT 4 RAMPS WITH NB & SB MAINLINE



**PROJECT OVERVIEW:** Contract 14633D will reconstruct and widen approximately two miles of the NB and SB lanes of I-93, starting just south of the Kendall Pond Road Bridges and proceeding northerly to just north of the Ash Street Bridge. Work to improve Exit 4 area will include the reconstruction of ramps and bridges.

PROJECT FACTS	CONTRACT: 14633D
Advertised Date:	Sept. 20, 2016
Award Date:	Dec. 21, 2016
Start Construction Date:	Jan. 9, 2017
Est. Completion Date:	Sept. 2020
Bid Price:	62.3M
Total Est. Construction Cost: (bid plus inspection, testing, oversight, etc.)	\$66.7M
Construction funded with a \$200M TIFIA loan.	
Contractor: R.S. Audley, Inc.	

### PROJECT SCHEDULE

% Complete: 40%

**Recent Activities:** For the NH Route 102 Bridge, deck formwork is complete, steel reinforcement has been placed, and concrete deck pours have begun. Structural steel installation and setting of deck panels are complete for the Ash Street/Pillsbury Road Bridge. The NB mainline approaching NH Route 102 Bridge and the NB off-ramp were paved.

**Upcoming Activities:** Upcoming work for the NB Beaver Brook Bridge will include removing the remaining culvert and beginning to drive piles. Work continues on NH Route 102 Bridge including completing the deck, median, sidewalk placements and approach slab work, as well as earthwork on either side. It is anticipated that the NH Route 102 Bridge will open to traffic in August of 2018.

CONTRACT 14633D  
EXIT 4 RAMPS WITH NB & SB MAINLINE

PROJECT FACT SHEET

Updated: 6-27-18



[RebuildingI93.com](http://RebuildingI93.com)

MOVING  
AHEAD



LEFT: A TYBOT TIES REINFORCING STEEL ON NH ROUTE 102 BRIDGE .



RIGHT: DRAINAGE INSTALLATION UNDERGOES CONSTRUCTION.



LEFT: ASH STREET/PILLSBURY ROAD BRIDGE STRUCTURAL STEEL IS SET.



RIGHT: PLACEMENT OF NH ROUTE 102 BRIDGE DECK PANELS