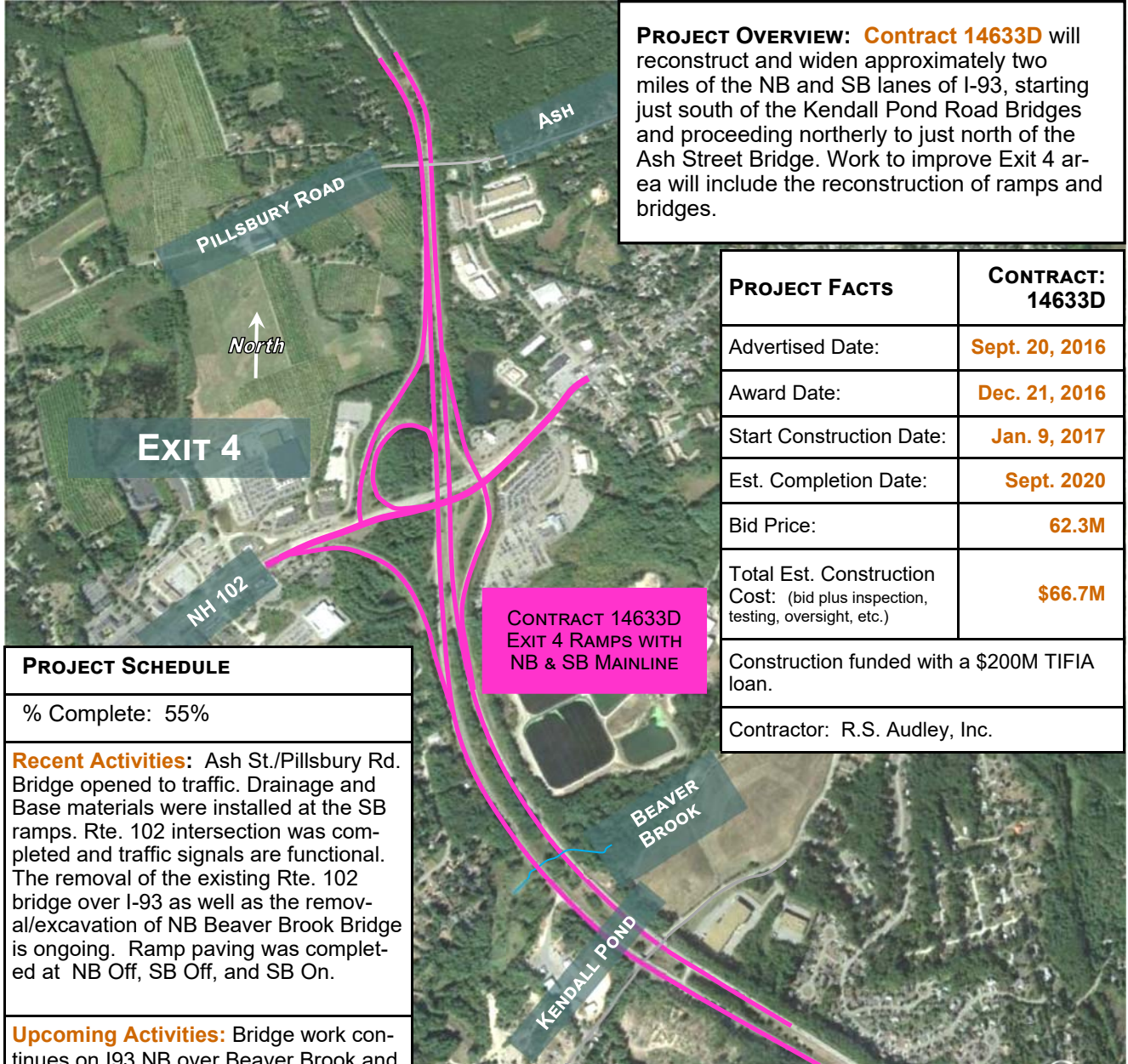


# REBUILDING I-93 SALEM TO MANCHESTER



## 14633D: EXIT 4 RAMPS WITH NB & SB MAINLINE

PROJECT FACT SHEET



**PROJECT OVERVIEW:** Contract 14633D will reconstruct and widen approximately two miles of the NB and SB lanes of I-93, starting just south of the Kendall Pond Road Bridges and proceeding northerly to just north of the Ash Street Bridge. Work to improve Exit 4 area will include the reconstruction of ramps and bridges.

PROJECT FACTS	CONTRACT: 14633D
Advertised Date:	Sept. 20, 2016
Award Date:	Dec. 21, 2016
Start Construction Date:	Jan. 9, 2017
Est. Completion Date:	Sept. 2020
Bid Price:	62.3M
Total Est. Construction Cost: (bid plus inspection, testing, oversight, etc.)	\$66.7M
Construction funded with a \$200M TIFIA loan.	
Contractor: R.S. Audley, Inc.	

PROJECT SCHEDULE
% Complete: 55%
<b>Recent Activities:</b> Ash St./Pillsbury Rd. Bridge opened to traffic. Drainage and Base materials were installed at the SB ramps. Rte. 102 intersection was completed and traffic signals are functional. The removal of the existing Rte. 102 bridge over I-93 as well as the removal/excavation of NB Beaver Brook Bridge is ongoing. Ramp paving was completed at NB Off, SB Off, and SB On.
<b>Upcoming Activities:</b> Bridge work continues on I93 NB over Beaver Brook and I93 NB and SB over Kendall Pond Rd. Ash St. Bridge approaches will be finalized and the existing bridge will be demolished. Demolition continues at the existing Rte. 102 Bridge. Signals at the SB Offramp/Rte. 102 intersection will be installed. Traffic shift planned for I93 NB north of Ash St.

Updated: 11/13/2018



[RebuildingI93.com](http://RebuildingI93.com)

MOVING  
AHEAD



*ASH STREET BRIDGE OPENS TO TRAFFIC.*



*NB BEAVER BROOK BRIDGE*



*SB ON-RAMP*



*NB TRAFFIC SHIFT AT EXIT 4*



*CONSTRUCTION OF WATER QUALITY BASIN*



*ROUTE 102 BRIDGE DEMOLITION*

14633D



[RebuildingI93.com](http://RebuildingI93.com)

MOVING  
AHEAD